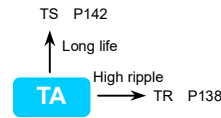


# TA 系列 SERIES



- 全焊结构，确保可靠的电气接触性  
All-welded construction ensures reliable electrical contact
- 额定工作电压 750V 以下  
Working voltage below 750V
- 保证 85°C、2000 小时寿命。(叠加纹波电流)  
Endurance with ripple current: 2000 hours at 85°C
- 应用：变频器、不间断电源和电焊机  
Applications: Frequency converters, Uninterruptible power supplies and Electric welding machine



## 规格表 SPECIFICATIONS

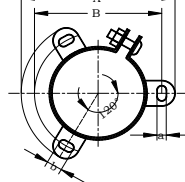
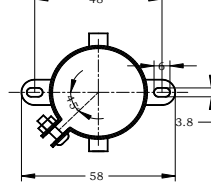
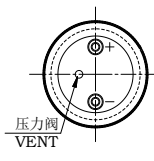
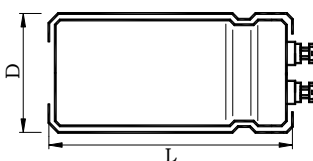
项目 Items	特性 Characteristics																																					
工作温度范围 Operating Temperature Range	-40~+85°C	-25~+85°C																																				
额定工作电压范围 Rated Working Voltage Range	10~250V	350~750V																																				
静电容量范围 Capacitance Range	820~820000 µF																																					
静电容量允许偏差 Capacitance Tolerance	±20% (20°C, 120Hz)																																					
损耗角正切值 Dissipation Factor (MAX) 20°C, 120Hz	<table border="1"> <thead> <tr> <th>U<sub>R</sub>(V)</th> <th>10-100</th> <th>160</th> <th>200</th> <th>250</th> <th>350</th> <th>400</th> <th>450</th> <th>500</th> <th>550</th> <th>600</th> <th>650</th> <th>700</th> <th>750</th> </tr> </thead> <tbody> <tr> <td>tanδ</td> <td>见规格表</td> <td colspan="2">0.20</td> <td colspan="3">0.15</td> <td colspan="2">0.20</td> <td colspan="2">0.25</td> <td colspan="2">0.30</td> <td></td> </tr> </tbody> </table>										U <sub>R</sub> (V)	10-100	160	200	250	350	400	450	500	550	600	650	700	750	tanδ	见规格表	0.20		0.15			0.20		0.25		0.30		
U <sub>R</sub> (V)	10-100	160	200	250	350	400	450	500	550	600	650	700	750																									
tanδ	见规格表	0.20		0.15			0.20		0.25		0.30																											
漏电流 Leakage Current (MAX)	I = 0.01C <sub>R</sub> U <sub>R</sub> 或 5mA 取小者 (20°C, 施加额定电压 5 分钟后) I = 0.01C <sub>R</sub> U <sub>R</sub> or 5mA whichever is minimum. (at 20°C, After 5 minutes application of rated voltage) I = 漏电流 (µA) U <sub>R</sub> = 额定电压 (V) C <sub>R</sub> = 静电容量 (µF) Leakage Current Rated Voltage Rated Capacitance																																					

	使用寿命 Useful Life		负荷寿命 Load Life	耐久性特性 Endurance Test	高温无负荷特性 Shelf Life	
产品寿命 Life Time	4000h	>65000h	2000h	2000h	1000h U <sub>R</sub> ≤ 550V	500h U <sub>R</sub> ≥ 600V
漏电流 Leakage Current	≤ 规定值 ≤ Specified value		≤ 规定值 ≤ Specified value	≤ 规定值 ≤ Specified value	≤ 规定值 ≤ Specified value	
损耗角正切值变化率 tanδ Change	≤ 规定值的 300% ≤ 300% of specified value		≤ 规定值的 175% ≤ 175% of specified value	≤ 规定值的 130% ≤ 130% of specified value	≤ 规定值的 150% ≤ 150% of specified value	
静电容量变化率 Capacitance Change	初始值 ± 30% 以内 Within ± 30% of initial value		初始值 ± 15% 以内 Within ± 15% of initial value	初始值 ± 10% 以内 Within ± 10% of initial value	初始值 ± 15% 以内 Within ± 15% of initial value	
施加条件 Condition 施加电压 Applied Voltage 施加纹波电流 Applied Ripple Current 环境温度 Applied Temperature 失效等级 Failure Rate Level	U <sub>R</sub> I <sub>R</sub> 85°C ≤ 1% Failure rate	U <sub>R</sub> 1.2 × I <sub>R</sub> 40°C ≤ 1% Failure rate	U <sub>R</sub> I <sub>R</sub> 85°C 0%	U <sub>R</sub> I <sub>R</sub> = 0 85°C 0%	U <sub>R</sub> = 0 I <sub>R</sub> = 0 85°C 0%	Back up to 20 °C and placed more than 24 hours. U <sub>R</sub> to be applied for 60 min before measurement.

## 尺寸图 Dimensions

- 常用端子型式代码: Terminal Code

Ring Clip: T (Φ35 Standard) Ring Clip: S (Φ51~Φ100 Standard)



Ring Clip Dimensions:

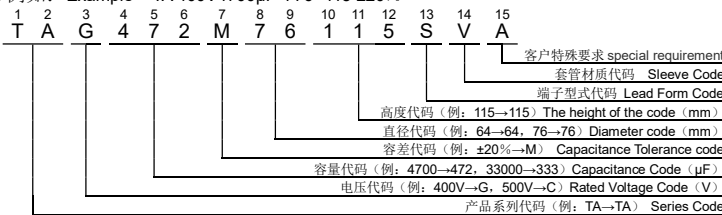
ΦD	A	B	a	b
51	73.0	63.5	4.5	7
64	85.1	76.2	4.5	7
76	98.4	88.9	4.5	7
89	111.1	101.6	4.5	7
100	127.0	115.0	6.2	8

产品详细尺寸和公差请参照 P130  
For detailed dimension & tolerance, please refer to P130

- 记载以外的端子形状，请另行咨询。Please consult to us for the terminal type not displayed in content.

## 产品编码体系 PART NUMBER SYSTEM

- 例如: Example TA 400V4700µF Φ76×115 ±20%



## 纹波电流修正系数 Rated Ripple Current Multiplies

### 频率修正系数 Frequency coefficient

电压范围 (v) Rated voltage	频率 (Hz) Frequency				
	50 (60)	100 (120)	300	1k	≥10k
10~50WV	0.95	1.00	1.04	1.10	1.15
63~100WV	0.95	1.00	1.06	1.16	1.30
160~500WV	0.80	1.00	1.10	1.25	1.50
550WV~750WV	0.80	1.00	1.10	1.30	1.40

### 温度修正系数 Temperature coefficient

电压范围 (v) Rated voltage	温度 (°C) Temperature			
	+40	+60	+70	+85
10~50WV	2.70	2.00	1.70	1.00
550~750WV	1.89	1.67	—	1.00

## ◆ 产品一览表 Standard Ratings

WV <sub>DC</sub> (Surge Voltage) (V)	Cap ( $\mu$ F)	Size D×L (mm)	tan $\delta$ 20°C 120Hz	ESR <sub>typ</sub> 20°C 120Hz m $\Omega$	Ripple Current 85°C 120Hz (Arms)	Catalog Part Number
10 (13)	33000	35×60	0.80	20.5	5.1	TAW333M35060□VA
	39000	35×60	0.80	17.6	5.6	TAW393M35060□VA
	47000	35×60	0.80	14.6	6.2	TAW473M35060□VA
	56000	35×80	0.80	12.5	7.3	TAW563M35080□VA
	68000	35×80	0.80	10.1	8.0	TAW683M35080□VA
	82000	35×100	0.80	9.0	9.2	TAW823M35100□VA
	100000	35×100	0.80	7.5	10.5	TAW104M35100□VA
	120000	35×120	0.80	7.1	12.0	TAW124M35120□VA
	150000	35×120	1.00	6.5	12.9	TAW154M35120□VA
	180000	51×95	1.00	6.0	13.4	TAW184M51095□VA
	220000	51×115	1.50	5.0	14.4	TAW224M51115□VA
	270000	51×115	1.50	4.4	15.3	TAW274M51115□VA
	330000	64×95	1.50	3.8	18.3	TAW334M64095□VA
	390000	64×115	1.50	3.4	20.7	TAW394M64115□VA
	470000	64×130	2.00	2.9	20.2	TAW474M64130□VA
	560000	76×115	2.00	2.7	22.8	TAW564M76115□VA
680000	76×130	2.00	2.5	26.0	TAW684M76130□VA	
820000	76×155	2.00	2.4	29.5	TAW824M76155□VA	
16 (20)	22000	35×60	0.60	22.0	4.9	TAV223M35060□VA
	27000	35×60	0.60	19.1	5.4	TAV273M35060□VA
	33000	35×60	0.60	15.7	6.0	TAV333M35060□VA
	39000	35×60	0.60	13.1	7.1	TAV393M35060□VA
	47000	35×80	0.60	11.0	7.6	TAV473M35080□VA
	56000	35×80	0.60	9.5	8.7	TAV563M35080□VA
	68000	35×100	0.60	7.9	10.0	TAV683M35100□VA
	82000	35×100	0.80	6.8	9.9	TAV823M35100□VA
	100000	35×120	0.80	5.8	11.5	TAV104M35120□VA
	120000	35×120	0.80	5.1	13.0	TAV124M35120□VA
	150000	51×95	1.00	4.4	13.5	TAV154M51095□VA
	180000	51×115	1.00	4.0	14.0	TAV184M51115□VA
	220000	51×130	1.00	3.4	18.3	TAV224M51130□VA
	270000	64×95	1.00	3.0	19.3	TAV274M64095□VA
	330000	64×115	1.50	2.8	18.4	TAV334M64115□VA
	390000	64×130	1.50	2.6	21.9	TAV394M64130□VA
470000	76×115	1.50	2.4	25.5	TAV474M76115□VA	
560000	76×130	1.50	2.2	28.3	TAV564M76130□VA	
680000	76×155	1.50	2.0	33.1	TAV684M76155□VA	
820000	89×157	2.00	1.9	32.5	TAV824M89157□VA	
25 (32)	15000	35×60	0.50	22.0	4.4	TAU153M35060□VA
	18000	35×60	0.50	18.0	4.9	TAU183M35060□VA
	22000	35×60	0.50	15.8	5.4	TAU223M35060□VA
	27000	35×60	0.50	12.8	6.0	TAU273M35060□VA
	33000	35×80	0.50	11.0	7.1	TAU333M35080□VA
	39000	35×80	0.50	9.4	8.0	TAU393M35080□VA
	47000	35×100	0.50	7.8	9.2	TAU473M35100□VA
	56000	35×100	0.60	6.8	9.4	TAU563M35100□VA
	68000	35×120	0.60	5.8	11.0	TAU683M35120□VA
	82000	35×120	0.60	5.1	12.4	TAU823M35120□VA
	100000	51×95	0.60	4.4	12.9	TAU104M51095□VA
	120000	51×115	0.80	4.0	14.5	TAU124M51115□VA
	150000	51×130	0.80	3.4	16.9	TAU154M51130□VA
	180000	64×95	0.80	3.0	18.8	TAU184M64095□VA
	220000	64×115	1.00	2.8	19.3	TAU224M64115□VA
	270000	64×130	1.00	2.5	22.3	TAU274M64130□VA
330000	64×150	1.00	2.3	26.3	TAU334M64150□VA	
390000	76×115	1.20	2.2	26.5	TAU394M76115□VA	
470000	76×155	1.20	2.0	30.2	TAU474M76155□VA	
560000	89×130	1.20	1.8	32.9	TAU564M89130□VA	

WV <sub>DC</sub> (Surge Voltage) (V)	Cap ( $\mu$ F)	Size D×L (mm)	tan $\delta$ 20°C 120Hz	ESR <sub>typ</sub> 20°C 120Hz m $\Omega$	Ripple Current 85°C 120Hz (Arms)	Catalog Part Number
25(32)	680000	89×157	1.20	1.5	38.3	TAU684M89157□VA
35 (44)	10000	35×60	0.40	23.6	3.9	TAT103M35060□VA
	12000	35×60	0.40	20.0	4.2	TAT123M35060□VA
	15000	35×60	0.40	17.0	4.8	TAT153M35060□VA
	18000	35×80	0.40	13.7	5.4	TAT183M35080□VA
	22000	35×80	0.40	11.6	6.5	TAT223M35080□VA
	27000	35×100	0.40	9.4	7.2	TAT273M35100□VA
	33000	35×100	0.40	9.0	8.2	TAT333M35100□VA
	39000	35×120	0.50	8.2	9.5	TAT393M35120□VA
	47000	51×95	0.50	7.9	10.0	TAT473M51095□VA
	56000	51×95	0.60	7.6	9.8	TAT563M51095□VA
	68000	51×115	0.60	6.0	11.2	TAT683M51115□VA
	82000	64×95	0.60	4.8	13.3	TAT823M64095□VA
	100000	64×115	0.60	4.0	15.3	TAT104M64115□VA
	120000	64×115	0.80	3.9	17.0	TAT124M64115□VA
	150000	64×130	0.80	3.6	17.1	TAT154M64130□VA
	180000	76×115	0.80	3.2	19.5	TAT184M76115□VA
220000	76×130	0.80	2.9	23.0	TAT224M76130□VA	
270000	76×155	1.00	2.5	23.3	TAT274M76155□VA	
330000	89×130	1.00	2.3	27.0	TAT334M89130□VA	
390000	89×157	1.00	2.0	30.3	TAT394M89157□VA	
470000	89×157	1.00	1.8	33.9	TAT474M89157□VA	
50 (63)	5600	35×60	0.30	46.0	3.4	TAR562M35060□VA
	6800	35×60	0.30	38.0	3.7	TAR682M35060□VA
	8200	35×60	0.30	31.4	4.1	TAR822M35060□VA
	10000	35×60	0.30	25.8	4.6	TAR103M35060□VA
	12000	35×80	0.30	21.5	5.4	TAR123M35080□VA
	15000	35×80	0.30	15.0	6.3	TAR153M35080□VA
	18000	35×100	0.30	12.0	7.1	TAR183M35100□VA
	22000	35×120	0.40	10.8	7.2	TAR223M35120□VA
	27000	35×120	0.40	9.5	8.1	TAR273M35120□VA
	33000	51×95	0.40	8.9	9.4	TAR333M51095□VA
	39000	51×95	0.50	8.2	9.3	TAR393M51095□VA
	47000	51×115	0.50	7.6	10.7	TAR473M51115□VA
	56000	64×95	0.50	6.4	12.0	TAR563M64095□VA
	68000	64×95	0.50	5.3	13.8	TAR683M64095□VA
	82000	64×115	0.50	4.2	15.7	TAR823M64115□VA
	100000	76×115	0.60	3.9	16.9	TAR104M76115□VA
120000	76×115	0.60	3.3	19.2	TAR124M76115□VA	
150000	76×130	0.60	3.0	22.1	TAR154M76130□VA	
180000	76×155	0.60	2.5	25.1	TAR184M76155□VA	
220000	89×130	0.60	2.0	24.6	TAR224M89130□VA	
270000	89×157	0.60	1.8	28.6	TAR274M89157□VA	
63 (79)	3900	35×60	0.25	47.2	3.1	TAQ392M35060□VA
	4700	35×60	0.25	39.0	3.4	TAQ472M35060□VA
	5600	35×60	0.25	38.4	3.7	TAQ562M35060□VA
	6800	35×60	0.25	31.6	4.1	TAQ682M35060□VA
	8200	35×80	0.25	26.2	4.9	TAQ822M35080□VA
	10000	35×80	0.25	23.3	5.6	TAQ103M35080□VA
	12000	35×100	0.25	18.0	6.4	TAQ123M35100□VA
	15000	35×100	0.30	16.0	6.7	TAQ153M35100□VA
	18000	35×120	0.30	14.6	7.7	TAQ183M35120□VA
	22000	35×120	0.30	13.0	8.9	TAQ223M35120□VA
	27000	51×95	0.40	12.4	8.5	TAQ273M51095□VA
	33000	51×95	0.40	7.9	9.6	TAQ333M51095□VA
	39000	51×115	0.40	7.4	10.9	TAQ393M51115□VA
	47000	51×130	0.40	6.2	12.9	TAQ473M51130□VA
	56000	64×115	0.40	5.5	14.7	TAQ563M64115□VA

\*产品编码中□内为产品端子引出型式代码  
\*□Enter the appropriate terminal code

## ◆ 产品一览表 Standard Ratings

WV <sub>DC</sub> (Surge Voltage) (V)	Cap (μF)	Size D×L (mm)	tanδ 20°C 120Hz	ESR <sub>typ</sub> 20°C 120Hz mΩ	Ripple Current 85°C 120Hz (Arms)	Catalog Part Number
63 (79)	68000	64×115	0.50	5.3	15.4	TAQ683M64115□VA
	82000	64×130	0.50	4.4	16.0	TAQ823M64130□VA
	100000	76×115	0.50	3.6	18.4	TAQ104M76115□VA
	120000	76×130	0.50	3.0	20.9	TAQ124M76130□VA
	150000	76×155	0.50	2.4	24.6	TAQ154M76155□VA
	180000	89×130	0.60	2.3	24.6	TAQ184M89130□VA
	220000	89×157	0.60	2.0	28.8	TAQ224M89157□VA
80 (100)	3300	35×60	0.25	54.0	2.8	TAP332M35060□VA
	3900	35×60	0.25	46.0	3.2	TAP392M35060□VA
	4700	35×60	0.25	38.1	3.4	TAP472M35060□VA
	5600	35×80	0.25	32.0	4.1	TAP562M35080□VA
	6800	35×80	0.25	26.4	4.4	TAP682M35080□VA
	8200	35×80	0.25	22.1	5.1	TAP822M35080□VA
	10000	35×100	0.25	17.1	5.9	TAP103M35100□VA
	12000	35×100	0.25	15.0	6.7	TAP123M35100□VA
	15000	35×120	0.25	12.0	7.8	TAP153M35120□VA
	18000	35×120	0.25	10.4	8.9	TAP183M35120□VA
	22000	51×95	0.30	9.8	9.2	TAP223M51095□VA
	27000	51×95	0.30	8.0	10.5	TAP273M51095□VA
	33000	51×115	0.30	6.5	12.0	TAP333M51115□VA
	39000	51×130	0.30	6.0	13.8	TAP393M51130□VA
	47000	64×115	0.30	4.9	16.6	TAP473M64115□VA
	56000	64×130	0.40	4.3	15.4	TAP563M64130□VA
68000	76×115	0.40	4.0	17.7	TAP683M76115□VA	
82000	76×130	0.40	3.5	19.9	TAP823M76130□VA	
100000	76×155	0.40	2.8	23.1	TAP104M76155□VA	
120000	89×130	0.40	2.4	24.6	TAP124M89130□VA	
150000	89×157	0.40	2.0	29.0	TAP154M89157□VA	
100 (125)	3300	35×60	0.25	34.6	2.9	TAO332M35060□VA
	3900	35×80	0.25	28.4	3.3	TAO392M35080□VA
	4700	35×80	0.25	26.3	3.8	TAO472M35080□VA
	5600	35×100	0.25	23.0	4.3	TAO562M35100□VA
	6800	35×100	0.25	21.8	5.0	TAO682M35100□VA
	8200	35×120	0.25	20.0	5.6	TAO822M35120□VA
	10000	35×120	0.25	18.7	6.5	TAO103M35120□VA
	12000	51×80	0.25	16.0	7.0	TAO123M51080□VA
	15000	51×95	0.25	11.5	7.7	TAO153M51095□VA
	18000	51×115	0.25	9.8	9.1	TAO183M51115□VA
	22000	51×130	0.25	7.9	11.0	TAO223M51130□VA
	27000	64×115	0.25	6.8	12.6	TAO273M64115□VA
	33000	64×130	0.25	5.5	13.1	TAO333M64130□VA
	39000	76×115	0.25	4.9	14.7	TAO393M76115□VA
47000	76×130	0.35	4.5	15.7	TAO473M76130□VA	
56000	76×155	0.35	4.0	17.6	TAO563M76155□VA	
68000	89×130	0.35	3.4	20.7	TAO683M89130□VA	
82000	89×157	0.35	3.0	22.6	TAO823M89157□VA	
100000	89×170	0.35	2.5	26.4	TAO104M89170□VA	
160 (200)	3900	51×80	0.20	27.2	5.8	TAN392M51080□VA
	4700	51×80	0.20	22.6	6.4	TAN472M51080□VA
	5600	51×95	0.20	19.0	7.7	TAN562M51095□VA
	6800	51×95	0.20	15.6	8.6	TAN682M51095□VA
	8200	51×115	0.20	12.9	10.0	TAN822M51115□VA
	10000	64×95	0.20	10.6	11.4	TAN103M64095□VA
	12000	64×95	0.20	8.8	12.4	TAN123M64095□VA
	15000	64×130	0.20	7.1	15.7	TAN153M64130□VA
	18000	64×130	0.20	5.9	17.2	TAN183M64130□VA
	22000	76×130	0.20	5.1	20.1	TAN223M76130□VA
27000	76×130	0.20	4.2	22.2	TAN273M76130□VA	

WV <sub>DC</sub> (Surge Voltage) (V)	Cap (μF)	Size D×L (mm)	tanδ 20°C 120Hz	ESR <sub>typ</sub> 20°C 120Hz mΩ	Ripple Current 85°C 120Hz (Arms)	Catalog Part Number
160 (200)	33000	89×130	0.20	3.6	26.2	TAN333M89130□VA
	39000	89×157	0.20	3.1	30.7	TAN393M89157□VA
	47000	89×170	0.20	2.7	34.9	TAN473M89170□VA
	56000	89×195	0.20	2.3	38.1	TAN563M89195□VA
	68000	89×220	0.20	1.9	40.3	TAN683M89220□VA
		2200	35×100	0.20	48.3	3.9
	2700	35×120	0.20	39.3	4.7	TAL272M35120□VA
	3300	51×80	0.20	32.2	5.3	TAL332M51080□VA
	3900	51×80	0.20	27.2	5.7	TAL392M51080□VA
	4700	51×95	0.20	22.6	6.4	TAL472M51095□VA
	5600	51×115	0.20	19.0	7.6	TAL562M51115□VA
	6800	51×130	0.20	15.6	8.8	TAL682M51130□VA
	8200	64×95	0.20	11.3	9.4	TAL822M64095□VA
	10000	64×95	0.20	9.3	10.5	TAL103M64095□VA
	12000	76×95	0.20	8.3	12.1	TAL123M76095□VA
	15000	76×95	0.20	6.6	14.4	TAL153M76095□VA
	18000	76×130	0.20	5.5	16.5	TAL183M76130□VA
	22000	76×155	0.20	4.0	19.6	TAL223M76155□VA
	27000	89×130	0.20	3.2	21.5	TAL273M89130□VA
	33000	76×170	0.20	2.5	24.0	TAL333M76170□VA
	33000	89×160	0.20	2.5	25.5	TAL333M89160□VA
	36000	89×160	0.20	2.5	26.8	TAL363M89160□VA
	47000	89×195	0.20	2.4	35.1	TAL473M89195□VA
	56000	89×220	0.20	2.1	39.1	TAL563M89220□VA
	68000	100×220	0.20	1.8	47.5	TAL683M00220□VA
200 (250)	1800	35×100	0.20	40.5	3.8	TAJ182M35100□VA
	2200	51×80	0.20	32.0	4.4	TAJ222M51080□VA
	2700	51×80	0.20	27.0	5.0	TAJ272M51080□VA
	3300	51×95	0.20	22.1	5.9	TAJ332M51095□VA
	3900	51×115	0.20	19.7	6.9	TAJ392M51115□VA
	4700	64×95	0.20	16.4	7.8	TAJ472M64095□VA
	5600	64×95	0.20	14.2	8.6	TAJ562M64095□VA
	6800	64×115	0.20	11.7	10.0	TAJ682M64115□VA
	8200	64×115	0.20	10.5	11.0	TAJ822M64115□VA
	10000	64×130	0.20	10.0	12.9	TAJ103M64130□VA
	12000	76×115	0.20	8.3	14.3	TAJ123M76115□VA
	15000	76×130	0.20	7.1	16.6	TAJ153M76130□VA
	18000	76×155	0.20	5.8	19.5	TAJ183M76155□VA
	22000	89×160	0.20	3.8	23.2	TAJ223M89160□VA
33000	89×170	0.20	3.0	29.4	TAJ333M89170□VA	
47000	89×235	0.20	2.1	39.6	TAJ473M89235□VA	
56000	100×235	0.20	1.8	44.6	TAJ563M00235□VA	
250 (300)	1500	51×95	0.15	70.8	5.4	TAH152M51095□VA
	1800	51×95	0.15	59.0	6.0	TAH182M51095□VA
	2200	51×115	0.15	48.3	7.2	TAH222M51115□VA
	2700	51×130	0.15	39.3	8.4	TAH272M51130□VA
	3300	51×130	0.15	32.2	8.8	TAH332M51130□VA
	3900	64×115	0.15	27.2	10.9	TAH392M64115□VA
	4700	64×130	0.15	22.6	12.6	TAH472M64130□VA
	5600	76×115	0.15	19.0	13.7	TAH562M76115□VA
	6800	76×130	0.15	15.6	15.9	TAH682M76130□VA
	8200	76×155	0.15	12.9	18.9	TAH822M76155□VA
	10000	89×157	0.15	10.6	21.5	TAH103M89157□VA
	12000	89×157	0.15	8.8	23.6	TAH123M89157□VA
	15000	89×195	0.15	7.1	26.7	TAH153M89195□VA
	18000	89×235	0.15	5.9	33.4	TAH183M89235□VA
18000	100×155	0.15	5.9	31.6	TAH183M00235□VA	
22000	100×220	0.15	5.1	34.5	TAH223M00220□VA	
39000	100×237	0.15	3.4	47.6	TAH393M00237□VA	

\*产品编码中□内为产品端子引出型式代码  
\*□Enter the appropriate terminal code

## ◆ 产品一览表 Standard Ratings

WV <sub>DC</sub> (Surge Voltage) (V)	Cap ( $\mu$ F)	Size D×L (mm)	tan $\delta$ 20°C 120Hz	ESR <sub>typ</sub> 20°C 120Hz m $\Omega$	Ripple Current 85°C 120Hz (Arms)	Catalog Part Number
400 (450)	820	35×100	0.15	97.1	3.5	TAG821M35100□VA
	1000	51×80	0.15	82.3	4.5	TAG102M51080□VA
	1200	51×80	0.15	67.5	4.9	TAG122M51080□VA
	1500	51×95	0.15	57.5	6.0	TAG152M51095□VA
	1800	51×95	0.15	47.2	6.5	TAG182M51095□VA
	2200	51×115	0.15	34.8	7.5	TAG222M51115□VA
	2200	64×80	0.15	34.8	7.3	TAG222M64080□VA
	2200	64×95	0.15	34.8	7.9	TAG222M64095□VA
	2700	64×95	0.15	32.9	9.8	TAG272M64095□VA
	2700	76×95	0.15	32.9	10.8	TAG272M76095□VA
	3300	64×105	0.15	31.0	10.1	TAG332M64105□VA
	3300	64×110	0.15	31.0	10.3	TAG332M64110□VA
	3300	64×115	0.15	31.0	10.5	TAG332M64115□VA
	3300	76×95	0.15	31.0	10.7	TAG332M76095□VA
	3900	64×130	0.15	24.8	12.0	TAG392M64130□VA
	3900	76×95	0.15	24.8	11.5	TAG392M76095□VA
	4700	76×115	0.15	22.6	13.8	TAG472M76115□VA
	5600	76×130	0.15	19.0	15.8	TAG562M76130□VA
	6800	76×145	0.15	15.4	17.2	TAG682M76145□VA
	6800	76×150	0.15	15.4	17.5	TAG682M76150□VA
	6800	76×155	0.15	15.4	17.8	TAG682M76155□VA
	6800	89×130	0.15	15.4	18.1	TAG682M89130□VA
8200	89×145	0.15	12.9	19.3	TAG822M89145□VA	
8200	89×157	0.15	12.9	20.0	TAG822M89157□VA	
10000	89×157	0.15	10.6	22.0	TAG103M89157□VA	
12000	89×195	0.15	9.4	25.0	TAG123M89195□VA	
15000	89×220	0.15	8.0	28.7	TAG153M89220□VA	
15000	89×235	0.15	8.0	29.5	TAG153M89235□VA	
18000	89×235	0.15	7.0	32.3	TAG183M89235□VA	
22000	100×237	0.15	5.7	34.9	TAG223M00237□VA	
450 (500)	820	51×80	0.15	95.5	4.1	TAE821M51080□VA
	1000	51×80	0.15	82.3	4.5	TAE102M51080□VA
	1200	51×95	0.15	71.9	5.3	TAE122M51095□VA
	1500	51×115	0.15	58.4	6.5	TAE152M51115□VA
	1800	51×130	0.15	50.1	7.3	TAE182M51130□VA
	2200	64×95	0.15	42.8	8.2	TAE222M64095□VA
	2700	64×115	0.15	34.9	9.9	TAE272M64115□VA
	3300	64×130	0.15	29.8	11.5	TAE332M64130□VA
	3900	76×115	0.15	27.2	13.1	TAE392M76115□VA
	4700	76×130	0.15	22.6	14.8	TAE472M76130□VA
	5600	76×155	0.15	19.0	17.4	TAE562M76155□VA
	6800	89×157	0.15	15.6	19.6	TAE682M89157□VA
	8200	89×157	0.15	12.9	21.6	TAE822M89157□VA
	10000	89×195	0.15	11.3	24.5	TAE103M89195□VA
	12000	89×235	0.15	9.4	27.3	TAE123M89235□VA
	15000	89×235	0.15	8.0	30.5	TAE153M89235□VA
	18000	100×220	0.15	7.0	33.4	TAE183M00220□VA
	22000	100×260	0.15	5.7	38.7	TAE223M00260□VA
500 (550)	1000	51×115	0.20	84.9	5.3	TAC102M51115□VA
	1200	51×115	0.20	73.0	5.8	TAC122M51115□VA
	1500	51×130	0.20	60.2	6.8	TAC152M51130□VA
	1800	64×115	0.20	50.1	8.1	TAC182M64115□VA
	2200	64×130	0.20	41.0	9.4	TAC222M64130□VA
	2700	76×115	0.20	35.9	10.9	TAC272M76115□VA
	3300	76×130	0.20	31.8	12.4	TAC332M76130□VA

WV <sub>DC</sub> (Surge Voltage) (V)	Cap ( $\mu$ F)	Size D×L (mm)	tan $\delta$ 20°C 120Hz	ESR <sub>typ</sub> 20°C 120Hz m $\Omega$	Ripple Current 85°C 120Hz (Arms)	Catalog Part Number
500 (550)	3900	76×130	0.20	29.6	13.4	TAC392M76130□VA
	4700	76×155	0.20	24.6	15.9	TAC472M76155□VA
	5600	89×157	0.20	20.9	17.7	TAC562M89157□VA
	6800	89×170	0.20	17.2	20.3	TAC682M89170□VA
	8200	76×220	0.20	13.9	21.7	TAC822M76220□VA
	10000	89×235	0.20	10.0	26.9	TAC103M89235□VA
550 (600)	1000	51×130	0.20	110.0	5.2	TAZ102M51130□VA
	1200	51×130	0.20	95.0	5.7	TAZ122M51130□VA
	1500	64×115	0.20	74.0	6.9	TAZ152M64115□VA
	1800	76×95	0.20	72.0	7.6	TAZ182M76095□VA
	2200	76×115	0.20	50.0	8.5	TAZ222M76115□VA
	2700	76×130	0.20	40.0	10.0	TAZ272M76130□VA
	3300	89×130	0.20	36.0	11.7	TAZ332M89130□VA
	4700	89×157	0.20	24.0	15.0	TAZ472M89157□VA
	5600	89×170	0.20	20.0	17.1	TAZ562M89170□VA
	6800	89×195	0.20	16.0	19.5	TAZ682M89195□VA
8200	89×220	0.20	14.0	23.6	TAZ822M89220□VA	
10000	89×250	0.20	11.9	25.3	TAZ103M89250□VA	
600 (650)	1000	64×80	0.20	144.6	6.2	TAB102M64080□VA
	1200	64×95	0.20	121.0	6.7	TAB122M64095□VA
	1500	64×115	0.20	112.0	8.0	TAB152M64115□VA
	1800	76×95	0.20	97.0	9.6	TAB182M76095□VA
	2200	76×115	0.20	81.0	11.5	TAB222M76115□VA
	2700	76×130	0.20	66.0	12.1	TAB272M76130□VA
	3300	76×155	0.20	49.0	15.3	TAB332M76155□VA
	3900	76×195	0.20	37.0	18.4	TAB392M76195□VA
	4700	89×157	0.20	31.0	19.2	TAB472M89157□VA
	5600	89×195	0.20	28.0	22.0	TAB562M89195□VA
6800	89×220	0.20	23.0	24.0	TAB682M89220□VA	
650 (700)	1000	64×115	0.30	185.8	6.0	TAA102M64115□VA
	1200	64×130	0.30	154.8	6.9	TAA122M64130□VA
	1500	76×115	0.30	123.8	8.1	TAA152M76115□VA
	1800	76×130	0.30	103.2	9.5	TAA182M76130□VA
	2200	76×155	0.30	84.4	10.6	TAA222M76155□VA
	2700	89×130	0.30	68.8	12.5	TAA272M89130□VA
	3300	89×157	0.30	56.3	14.5	TAA332M89157□VA
	3900	89×170	0.30	47.6	16.0	TAA392M89170□VA
4700	89×195	0.30	39.5	18.6	TAA472M89195□VA	
5600	89×220	0.30	33.2	21.4	TAA562M89220□VA	
700 (750)	1000	64×130	0.30	199.0	5.2	TA5102M64130□VA
	1200	76×115	0.30	165.9	5.9	TA5122M76115□VA
	1500	76×130	0.30	132.7	6.9	TA5152M76130□VA
	1800	76×155	0.30	110.6	8.2	TA5182M76155□VA
	2200	89×157	0.30	90.5	9.9	TA5222M89157□VA
	2700	89×170	0.30	73.7	11.5	TA5272M89170□VA
3300	89×195	0.30	60.3	13.1	TA5332M89195□VA	
3900	89×220	0.30	51.0	15.0	TA5392M89220□VA	
750 (800)	820	64×115	0.30	291.3	4.5	TA6821M64115□VA
	1000	64×130	0.30	238.9	5.3	TA6102M64130□VA
	1200	76×115	0.30	199.0	6.0	TA6122M76115□VA
	1500	76×145	0.30	159.2	7.1	TA6152M76145□VA
	1800	76×170	0.30	132.7	8.4	TA6182M76170□VA
	2200	76×195	0.30	108.6	10.2	TA6222M76195□VA
	2700	89×170	0.30	88.5	11.8	TA6272M89170□VA
3300	89×195	0.30	72.4	13.4	TA6332M89195□VA	

\*产品编码中□内为产品端子引出型式代码

\*Enter the appropriate terminal code

\*记载之外的体积，请另行咨询。

\*Please ask for advice for other sizes.

\*铝电解电容器由于承受纹波电流而发热，随着温升而发生性能劣化。请在使用中降低产品承受的纹波电流。

\*Aluminum electrolytic capacitor will emit heat when ripple current is applied, the performance will deteriorate when temp. rises. Please reduce the ripple current when using capacitor.